

K3LR

**From the Western Edge of
Pennsylvania**

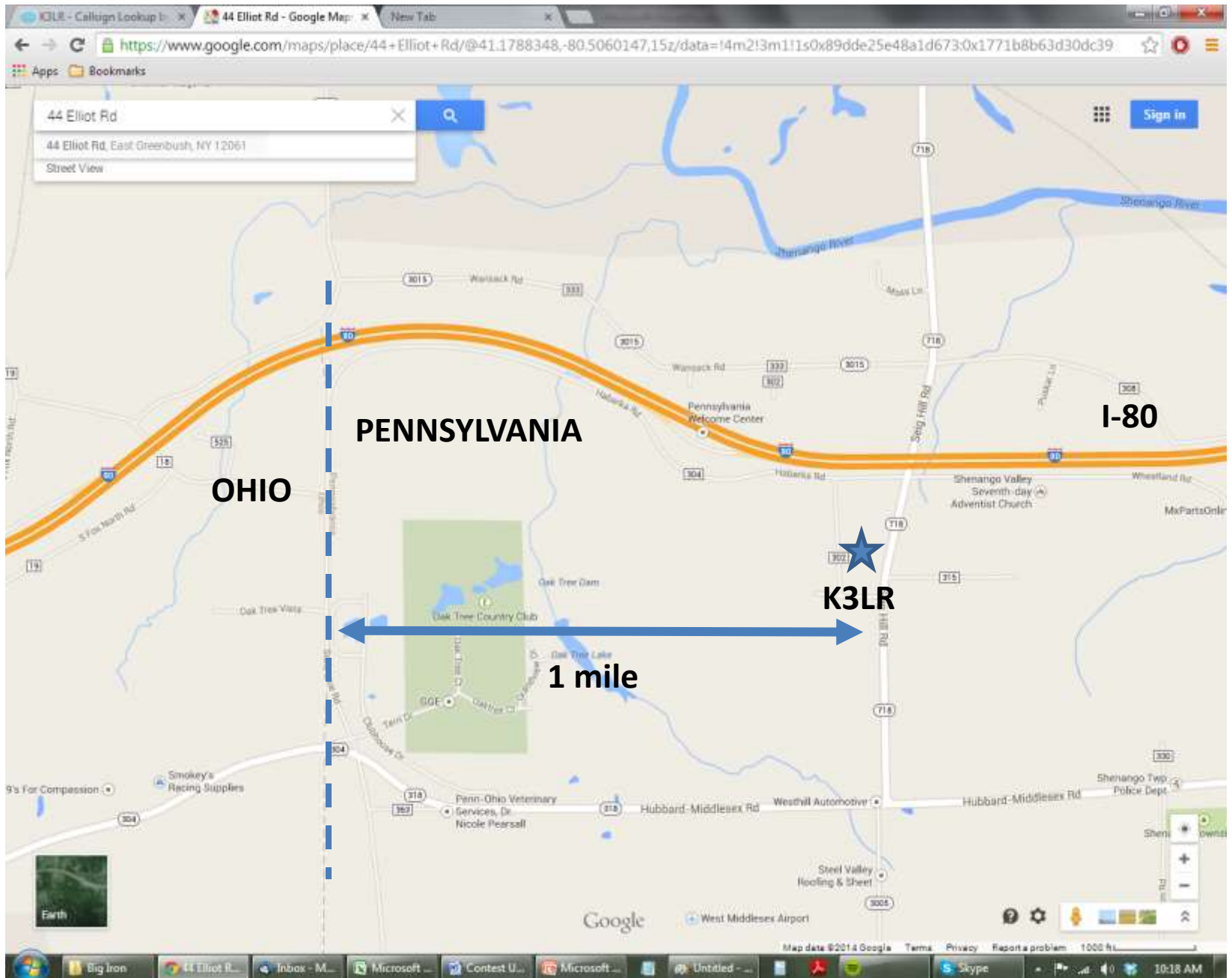
25 Years of Multi Multi Contesting

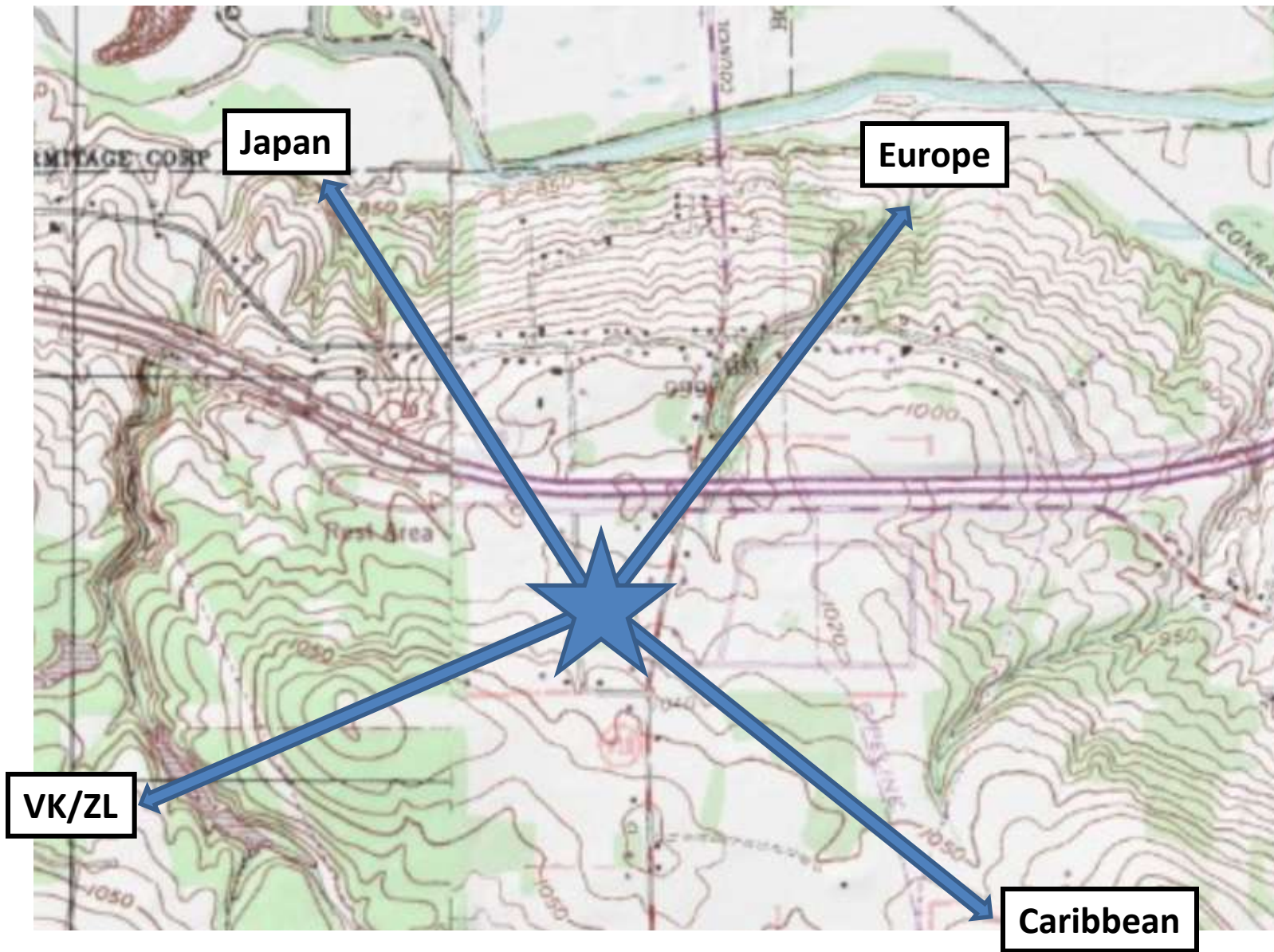


K3LR



About 65 miles NNW of Pittsburgh
www.k3lr.com





**10 and 20 M
RX 4-square**



**160 meter - TX
5-element array**

**80 meter
phased 4-squares**

**40/10 meter
Stacks 275 ft**



**15 meter 4 high
Stack - RUN**

**10 meter four high
Stack – 32 elements**

**20 meter
RUN Stack
245 feet**

302

40 Meter Tower

275 feet at the top

138 sq ft of load











20 meter RUN tower – Top is 245 feet 80 meter dipole





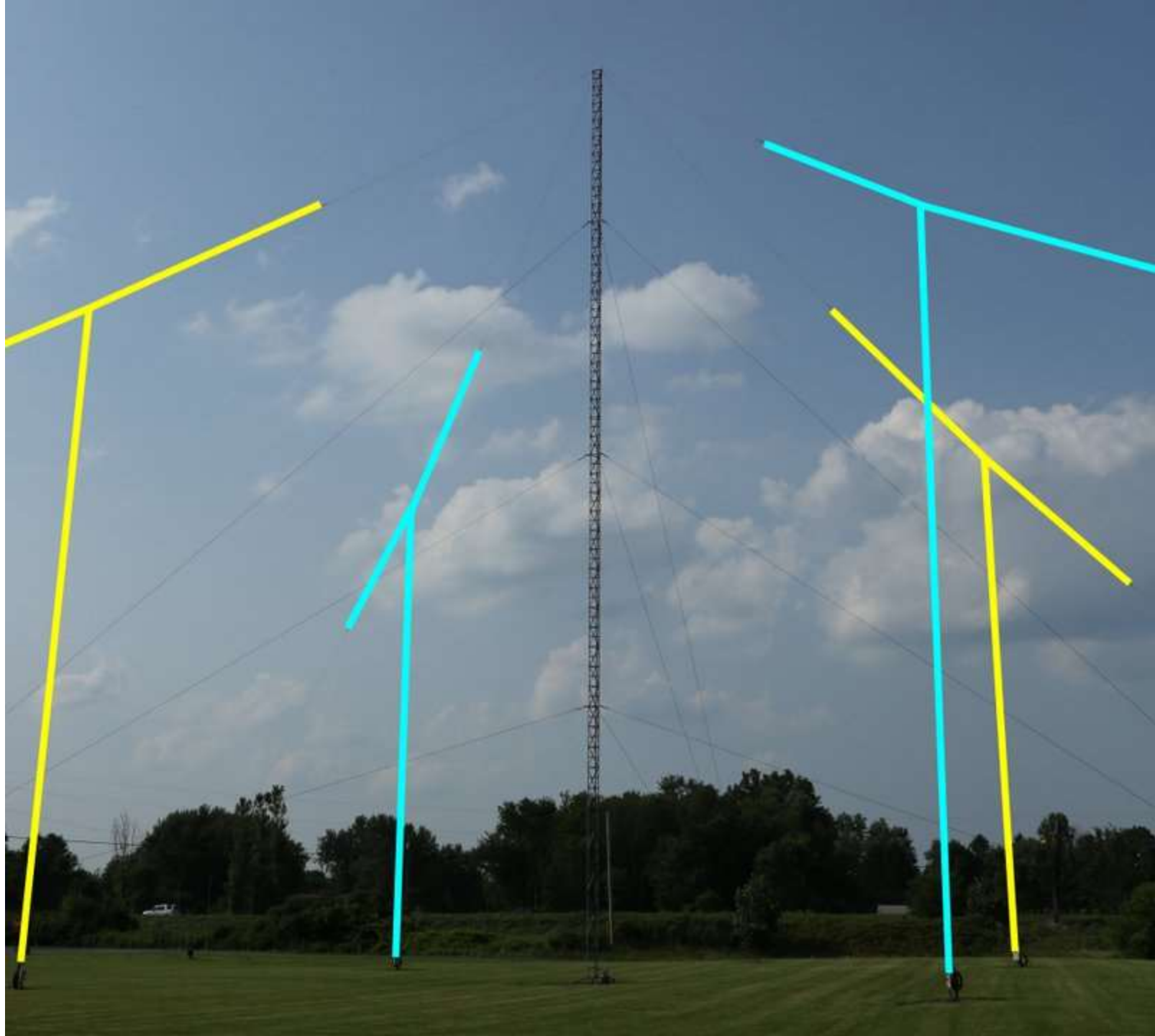






















20 Meter 4 Square

MULT Station RX Only



























01/02/2016 04:07



01/02/2016 04:16



KOHLER

01/02/2016 04:12



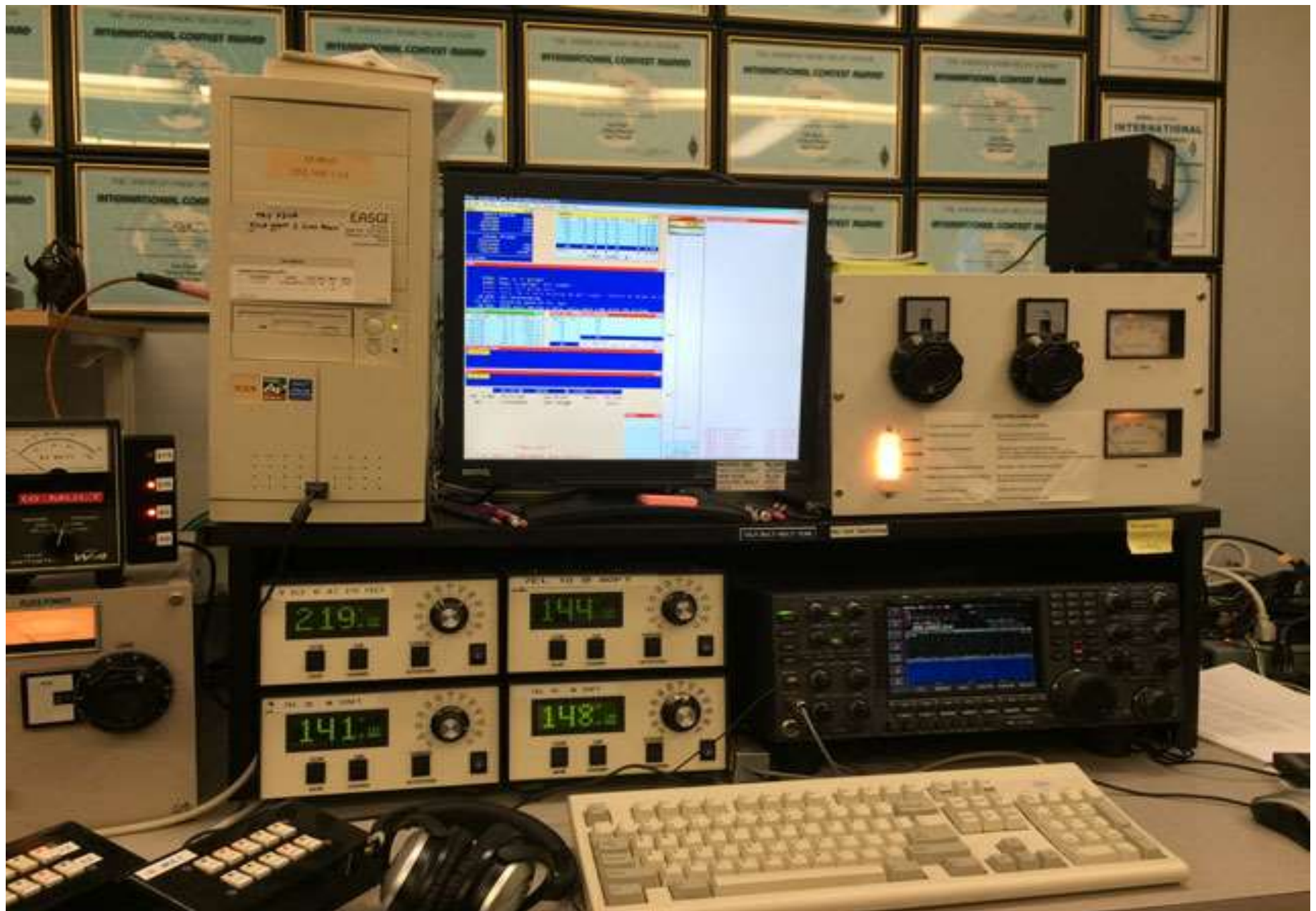






15 Meters is Serious





260'

190'

120'

ALL3

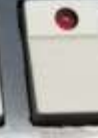
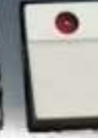
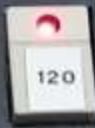
TOP2

BOT2

HILO

40 Meters

40 RUN

























PWR

NW

SE

BIP

BOP



DX LOOP BBE

RTX RX1 RX2 RX3 RX4 160 80 75 40 LP ON/OFF

HWF

MODEL NCC-1



PHASE

A dB

BALANCE

B dB



OFF On

Norm Rev

Norm Rev

L H

POWER

IN OUTS

B PHASE

BA D

A-RAS 4



SANDY

DL1QQ
also
N0QQ

THE ICOM IC-7851

1.2kHz "Optimum" roofing filter

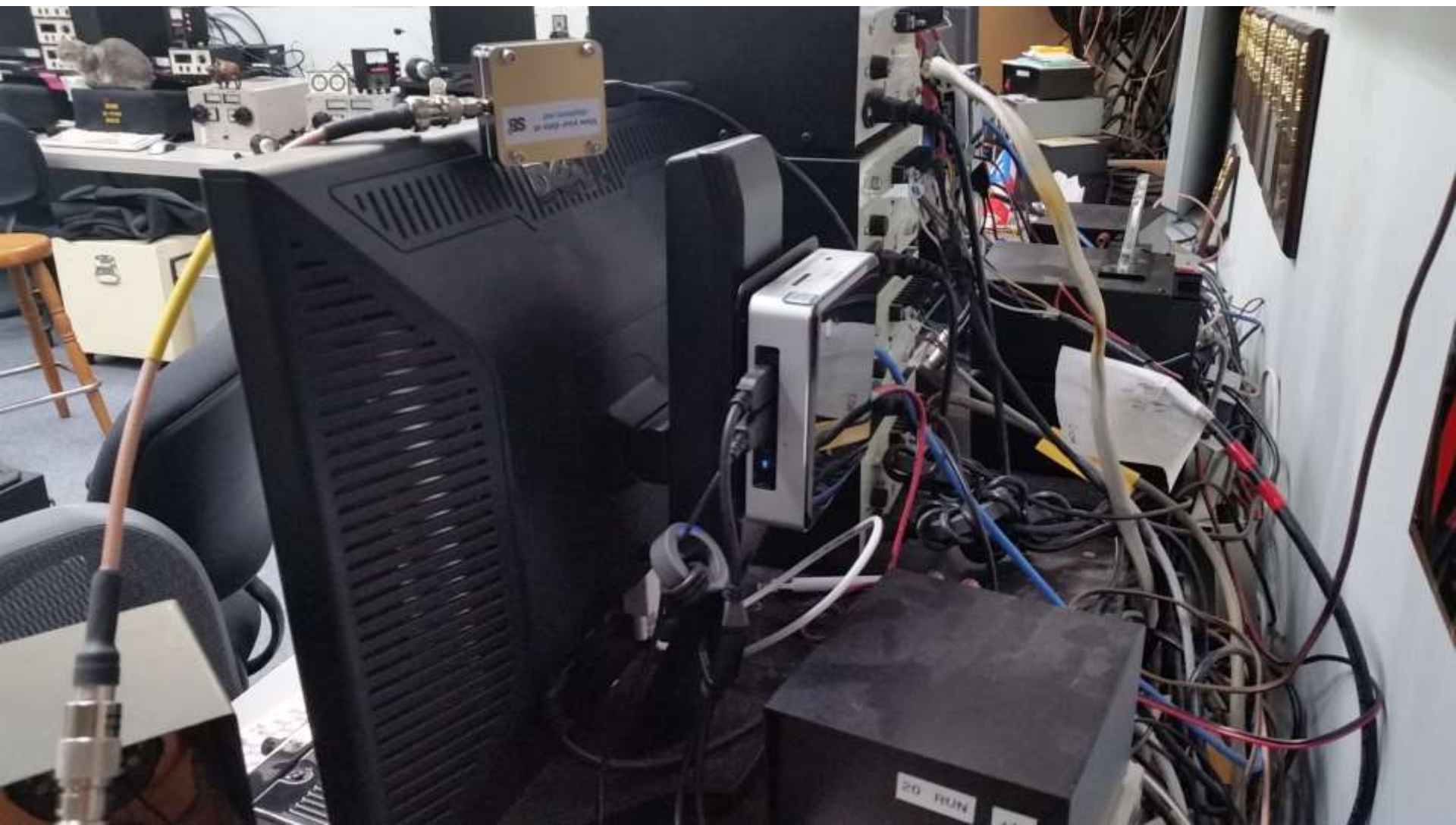
The IC-7851 utilizes a newly developed 1.2kHz roofing filter, greatly improving the in-band adjacent signal performance. This enhancement enables the up-conversion design of the IC-7851 to have excellent filter performance while providing a dynamic range that outperforms the competition in the 10kHz or less separation tests.

Improved phase noise

With the latest design of the LO, the IC-7851 will become the new benchmark for Phase Noise with -150dBc/Hz at 10kHz offset and -140dBc/Hz even at 1kHz offset. (Previous mark of Phase Noise excellence was -138dBc/Hz at 10kHz offset and -110dBc/Hz at 1kHz offset.)











80M LP FILTER #2

80M LP FILTER #2

40M LP FILTER #2

40M LP FILTER #2











01/02/2016 04:19



01/02/2016 04:21



Andy, N2NT



John, VE3EJ

Andy
N2NT

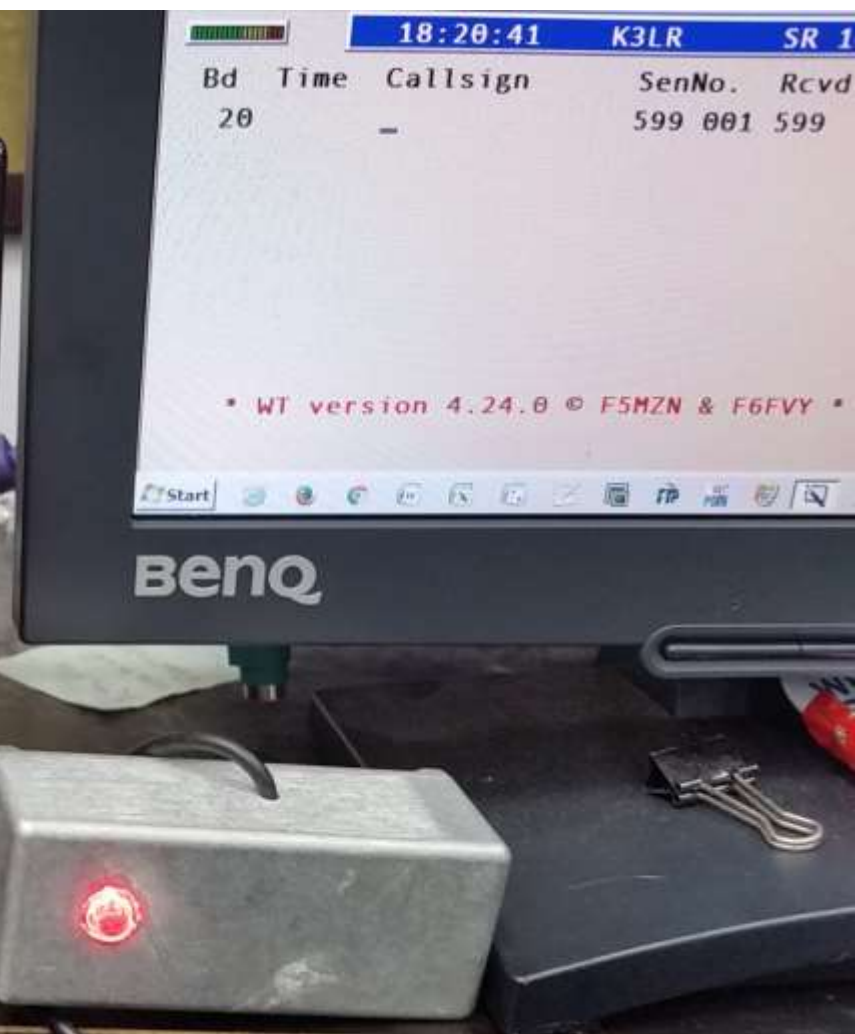


John K1AR











20 MULT

150

BIP

100

BOP

YAGI

TX

45

135

225

315

4SQ

RX

John K1AR



Dave KM3T

NP4G and N3GJ



PHIL K3UA



JUSTIN G4TSH



* K3LR HIGH MARKS *

ARRL SSB

Year	Category	Score	% of Top Score	Final Place	Winning Team	Total Q	C	160 Q	C	80 Q	C	40 Q	C	20 Q	C	15 Q	C	10 Q	C	SF
1992 MM					0 W3LPL															157
1993 MM					0 N2RM															164
1994 MM		6 840 255	78 18		3 N2RM	3 845 593	45 35	253 84		452 101		1 323 146		1 252 149		520 78				94
1995 MM		6 675 540	93 14		2 W3LPL	3 589 620	83 49	339 101		329 99		1 486 157		844 140		508 74				89
1996 MM					0 W3LPL															72
1997 MM		4 007 568	79 22		3 W3LPL	2 883 464	55 32	351 86		469 94		1 564 138		352 95		92 19				75
1998 MM		10 401 765	113 75		1 K3LR	5 731 605	87 48	453 92		706 110		2 203 153		1 765 146		517 56				92
1999 MM		1 941 282	17 92	20***	W3LPL	1 493 434	29 23	199 66		393 96		525 112		253 81		94 56				114
2000 MM		17 783 010	90 48		3 KC1XX	8 736 679	39 24	237 72		633 108		2 750 165		2 581 162		2 496 148				200
2001 MM					0 KC1XX															124
2002 MM					0 W3LPL															185
2003 MM					0 KC1XX															136
2004 MM		11 978 064	110 52		1 K3LR	6 524 612	84 51	492 91		939 114		2 339 147		2 443 147		227 62				104
2005 MM		9 335 862	106 96		1 K3LR	5 347 582	122 54	436 88		769 105		2 512 157		1 361 134		145 43				81
2006 MM		9 307 410	113 18		1 K3LR	5 407 574	143 66	705 95		779 115		2 678 153		1 023 124		79 21				75
2007 MM		7 874 118	112 87		1 K3LR	5 067 518	93 55	607 86		659 97		2 720 146		939 112		49 22				73
2008 MM		4 116 504	109 53		1 K3LR	3 209 428	90 49	485 86		507 93		1 852 130		225 58		50 12				69
2009 MM		6 895 875	94 09		2 W3LPL	4 678 492	146 67	673 92		1 072 106		2 413 139		304 68		65 20				69
2010 MM		12 421 860	113 74		1 K3LR	7 020 590	164 66	825 104		1 938 127		2 853 145		1 138 122		102 26				78
2011 MM		15 844 323	121 20		1 K3LR	7 945 671	138 59	665 96		1 215 119		2 501 149		2 696 140		730 108				135
2012 MM		11 991 528	104 92		1 K3LR	6 596 606	97 48	466 88		1 126 113		2 345 140		1 978 129		584 88				120
2013 MM		15 571 080	112 46		1 K3LR	7 858 668	114 57	590 90		1 338 120		2 271 149		2 354 143		1 192 109				111

All Time record	KC1XX	2000			SF. 200															
Line score		19 610 588		2000	KC1XX	9 460 691	45 29	406 85		632 103		2 700 164		2 777 159		2 900 151				
K3LR at record	Published	17 744 516	90 48	3		8 724 678	37 23	237 72		631 108		2 746 165		2 581 162		2 492 148				
K3LR Highest	Claimed	17 783 010	121 2	2000		8 736 679	164 67	825 104		1 938 127		2 853 165		2 696 162		2 496 148				
K3LR Lowest																				
Theoretical max Score at K3LR		25 444 068				10 972 773														

NOTES:

- 1 Percent of top score is the % of the top score as **published**
- 2 All Time Record is the score and breakdown as **published** for the Record holder
- 3 K3LR yearly scores and breakdowns are as **claimed unless otherwise noted**
- 4 K3LR at record is the K3LR score during the same contest when the record was set
- 5 The K3LR High All time row shows the highest score and Q/Z/C per band regardless of year
- 6 All MM winners from 1992 to present are shown
- 7 ***1999 was an aborted effort due to weather

NON MM ACTIVITY

1996 MS	3 112 488					2 488 417	67 46	341 87		268 82		1 636 138		131 52		45 12				72
1992 MS	4 388 504					3 126 468	12 11	50 34		137 63		1 091 107		657 117		1 179 136				157





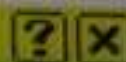


1 mult worth:

12.9 QSO

SSB TEMPO=100%

Summary



BAND	QSO	CQ	DXC	DUP	POINTS	AVG
160	417	16	48	9	353	0.85
80	864	26	102	27	2144	2.48
40	2053	38	137	59	5013	2.44
20	2784	39	168	97	7259	2.61
15	3327	39	164	97	9295	2.79
10	3242	38	170	41	9269	2.86
TOTAL	12687	196	789	330	33333	2.63
FINAL SCORE: 32 833 005						

Dx-Cluster announcements





Pennsylvania
K3LR
OK2PVX
No reply QSL is necessary
Please check K3LR in Easy QSL Cardset

Pennsylvania
K3LR
DL5KUD
No reply QSL is necessary
Please check K3LR in Easy QSL Cardset

Pennsylvania
K3LR
JH1U3U
No reply QSL is necessary
Please check K3LR in Easy QSL Cardset

Pennsylvania
K3LR
5N5N
No reply QSL is necessary
Please check K3LR in Easy QSL Cardset

Pennsylvania
K3LR
GDLZL
No reply QSL is necessary
Please check K3LR in Easy QSL Cardset

Pennsylvania
K3LR
JA2MG
No reply QSL is necessary
Please check K3LR in Easy QSL Cardset

Pennsylvania
K3LR
UW3L
No reply QSL is necessary
Please check K3LR in Easy QSL Cardset

Pennsylvania
K3LR
IZ1MKP
No reply QSL is necessary
Please check K3LR in Easy QSL Cardset



Comparison with all of the other multi-op stations on 3830 kHz after the contest



K3LR		W3LVL	
160	359 / 80	323 / 73	1315 / 105
80	1223 / 111	1942 / 131	2210 / 133
40	80 / 11	1208 / 101	1927 / 180
20	2311 / 134	261 / 76	7442 / 653
15	1208 / 101	14618058	14
10	230 / 76		
Total		7442	14



K3LR CQWW CW 2014



The REAL reason we do this...



Best Friends!



University of Pittsburgh
W3YI